

# Cottam Solar Project

## Consultation Report

### Appendix C5.4: Phase One Community Consultation Materials

### Parts 1 of 2

Prepared by: Counter Context  
January 2023

PINS reference: EN010133  
Document reference: APP/C5.4  
APFP Regulation 5(2)(q)



## **Contents**

<b><u>Phase One Community Consultation Leaflet</u></b>	<b><u>3</u></b>
<b><u>Phase One Feedback Form</u></b>	<b><u>20</u></b>
<b><u>Phase One Consultation Newspaper Advert</u></b>	<b><u>29</u></b>
<b><u>Phase One Site Area and Cable Route Search Corridor Maps</u></b>	<b><u>31</u></b>
<b><u>Phase One Information Event Boards</u></b>	<b><u>36</u></b>

## Phase One Community Consultation Leaflet

# Cottam Solar Project and West Burton Solar Project

Phase One Community Consultation Leaflet  
November 2021



# Introduction

**Welcome to our phase one consultation on our early-stage proposals for two new solar and energy storage projects that would cross the county border between Lincolnshire and Nottinghamshire.**

These proposals involve the generation of renewable power through solar photovoltaic (PV) panels. This clean energy would then be connected to the National Grid at Cottam and West Burton Power Stations with the facility to store some of this energy on site for when it is needed most.

The aim of our phase one consultation is to introduce ourselves, present our emerging proposals at this early stage, set out the opportunity for the projects, and receive feedback from the community to help identify and understand any local impacts. We are also keen to hear about other potential local needs or initiatives that we could facilitate or deliver directly, and we look forward to receiving your suggestions through the consultation.

Our consultation starts on **Wednesday 03 November 2021**. It will run for 6 weeks, closing on **Wednesday 15 December 2021**.

This consultation leaflet introduces who we are, our proposals for the Cottam and West Burton Solar Projects, and how you can get involved in our phase one consultation.

Feedback can be provided through our website, completing and submitting a feedback form, or contacting us through our communication channels. More information on this is set out on pages 13-14 of this leaflet.

## About us

**Cottam and West Burton Solar Projects are being developed by Island Green Power, who are a leading international developer of renewable energy projects, established in 2013.**

Island Green Power has delivered 26 solar projects worldwide totalling more than 1GW of capacity. This includes 14 solar projects in the UK and Republic of Ireland. Their mission is to increase solar energy usage, making more renewable energy possible and saving thousands of tonnes of CO<sub>2</sub> in the process.

Island Green Power is committed to responsible land use and believe that the development and delivery of large-scale solar farms can be achieved in harmony with their surroundings.



Island Green Power solar project in Trethosa, Cornwall

# The Opportunity

**From October 2024, Great Britain will no longer use coal to generate electricity. As part of this, the existing coal powered Cottam and West Burton Power Stations are due to close next year (2022).**

At the same time, we know demand for electricity is continuing to increase and that the UK faces some of the highest electricity costs in Europe. There is a clear need for **renewable, affordable, and reliable** energy.

The decommissioning of Cottam and West Burton Power Stations presents the opportunity to repower the region with clean, green energy.

## **Opportunities of the Cottam and West Burton Solar Projects include:**



The Cottam Solar Project could replace around 30% of the former generation capacity of the coal powered Cottam Power Station and generate enough clean energy to power 180,000 homes



The West Burton Solar project could replace around 24% of the generation capacity of the coal powered West Burton Power Station and generate enough clean energy to power 144,000 homes



Supporting regional and national targets for reducing carbon emissions to net zero by 2050



Improving energy resilience by diversifying energy production and storing energy for when it is needed most



Contributing towards strategic improvements to local ecology and biodiversity



Delivering affordable energy, as the electricity generated from solar is already cheaper than electricity generated from fossil fuels and the project would be subsidy free without taxpayer funding

Facilitating or directly delivering other potential local needs or initiatives, which could be suggested by you through our consultation

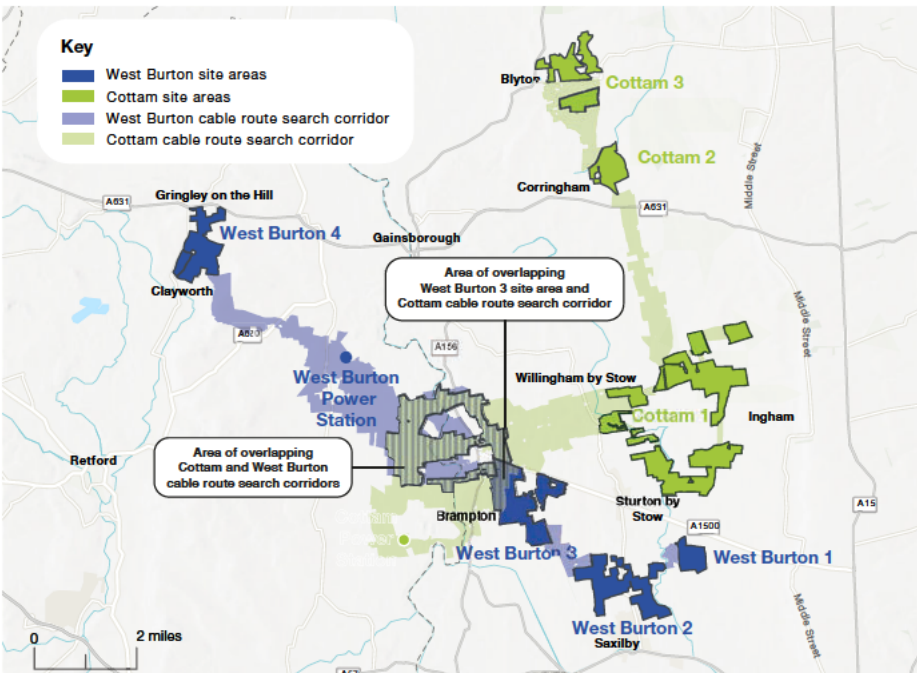


# The Projects

Both projects are named after their grid connection points at the existing National Grid substations at the Cottam Power Station and West Burton Power Station.

We recognise the proximity of these projects and are looking to develop the proposals in parallel.

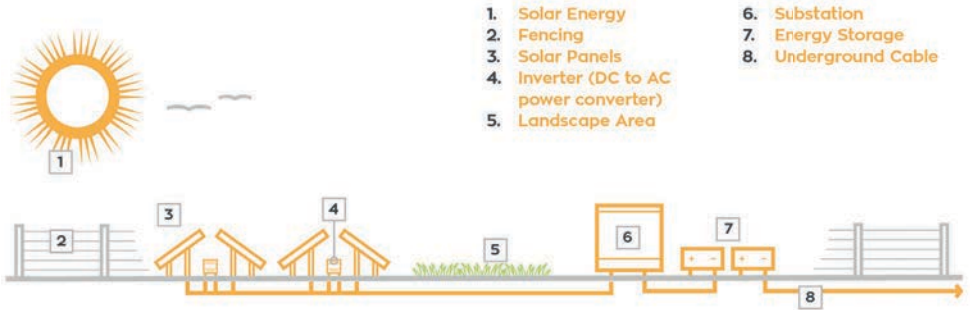
Each of the projects involves a series of areas of land which would host ground-mounted solar panels and be connected by underground cables. We are currently working with relevant landowners to refine the search corridors for the routes of these cables. Our cable routes will avoid residential properties and businesses, as well as other important local areas, such as heritage features or Sites of Special Scientific Interest (SSSIs).



Map of the proposed Cottam and West Burton site areas and cable route search corridors connecting to the National Grid

Although the exact technology and type of solar arrays to be used for the projects have yet to be decided, in part due to their rapid and ongoing development, the figure below shows the typical components involved in a solar project. For these projects, the infrastructure is spread over multiple sites.

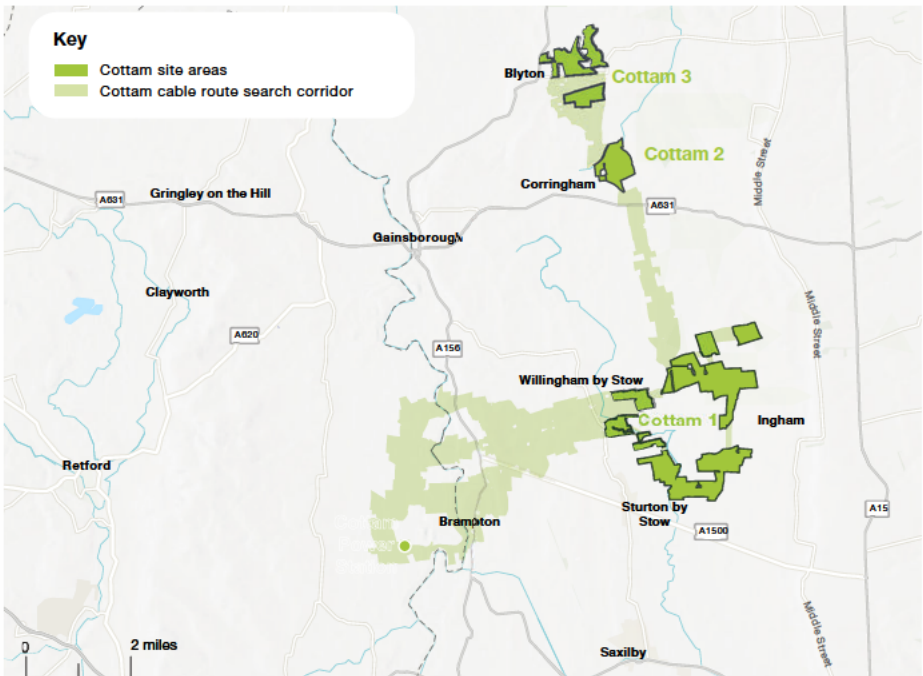
### Components of a typical solar project



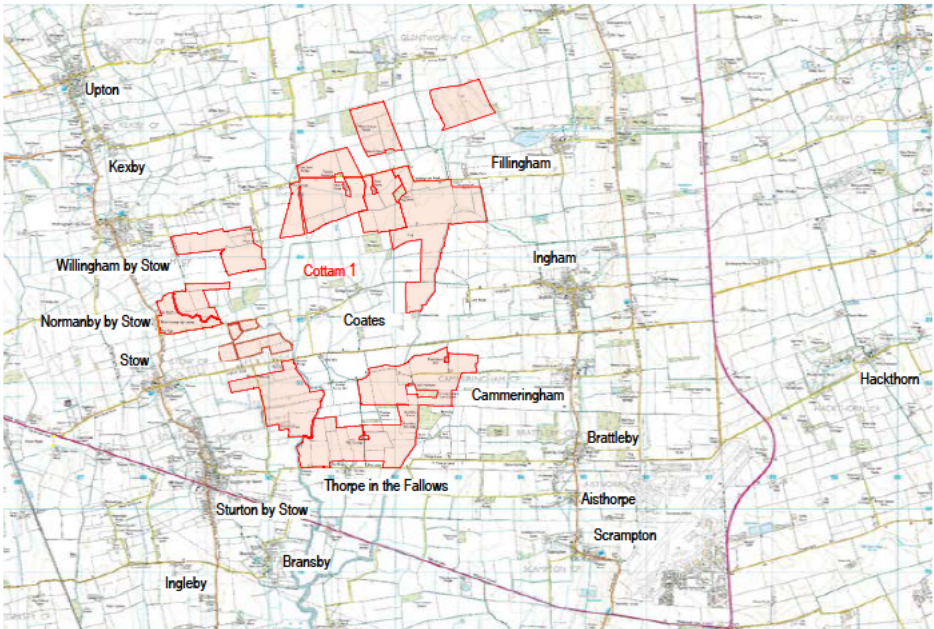
# Cottam Solar Project

The proposals for Cottam Solar Project involve a series of three areas of land (these sites are named Cottam 1-3) which would host the ground-mounted solar panels to be connected by underground cable. The project crosses the county boundary between Lincolnshire and Nottinghamshire.

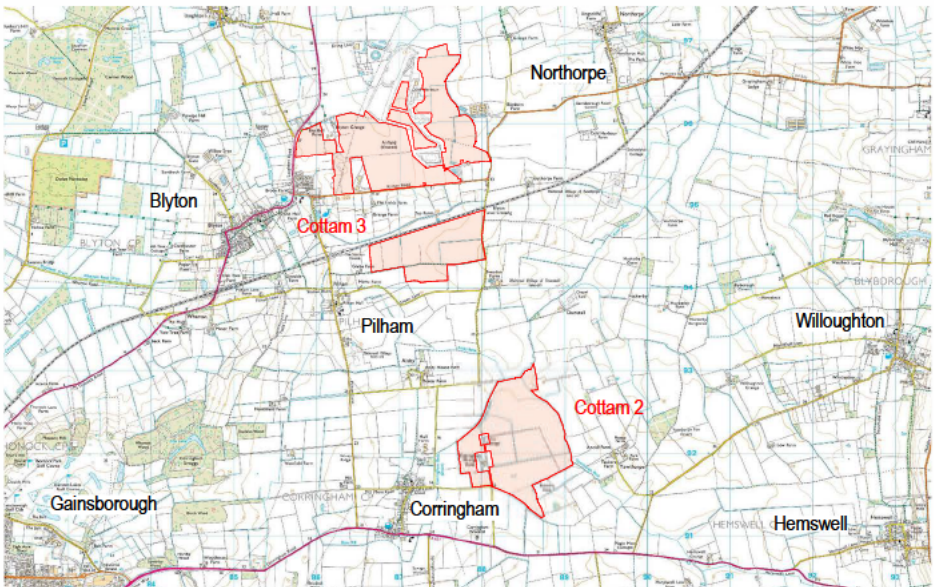
The project would generate around 600 MW of renewable energy, as well as having the capacity to store this energy for when it is needed most. The maps below show the proposed areas for solar development.



Map of the proposed Cottam site areas and cable route search corridor connecting to the National Grid



Cottam 1 (around 875 hectares)

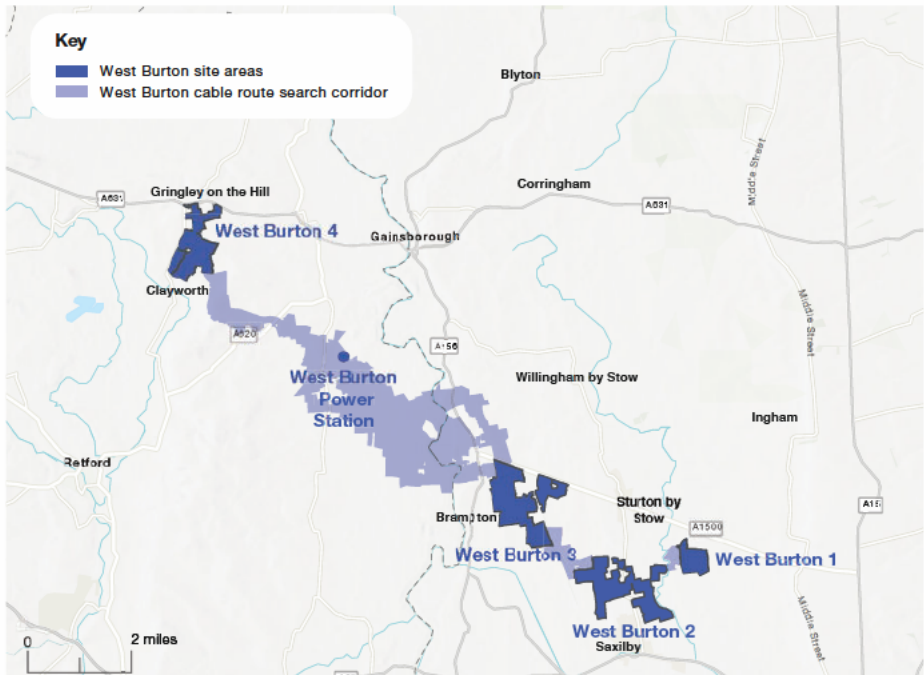


Cottam 2 (around 132 hectares) and Cottam 3 (around 138 hectares)

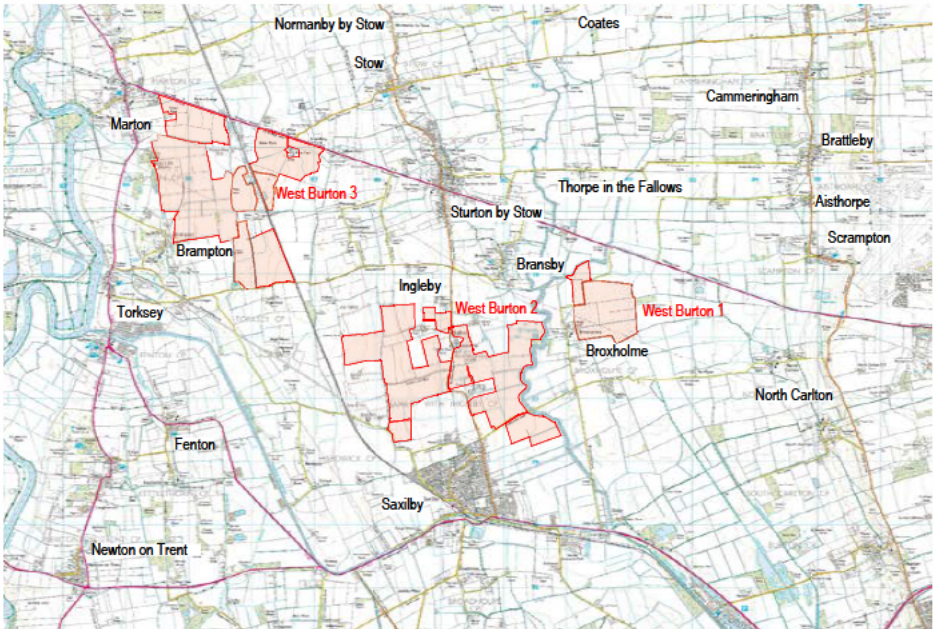
# West Burton Solar Project

The proposals for West Burton Solar Project involve a series separate land parcels. The sites which would host the ground-mounted solar panels to be connected by underground cable are named West Burton 1-4. The project also crosses the county boundary between Lincolnshire and Nottinghamshire.

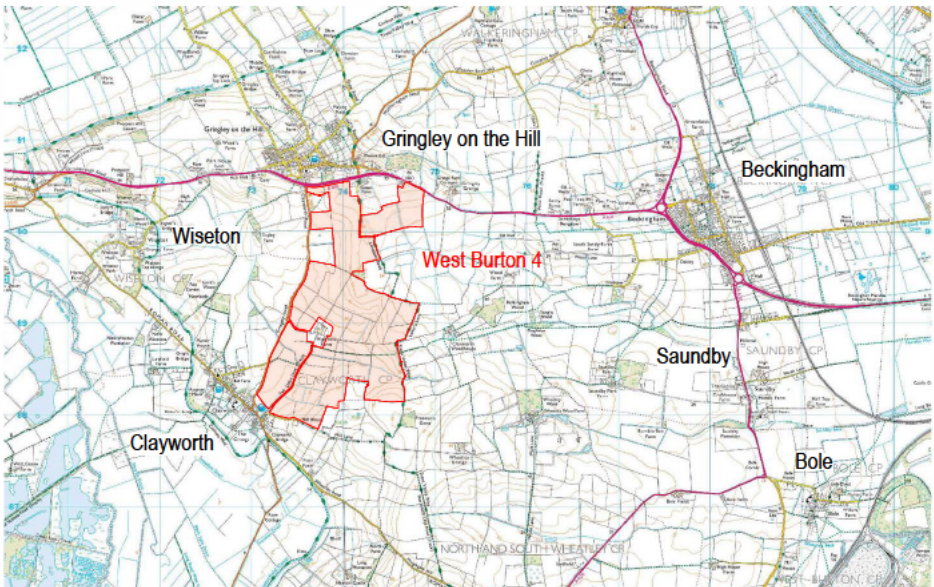
The project would generate around 480 MW of renewable energy and have the facility to store 20 MW of energy for when it is needed most. The maps below show the proposed areas for solar development and connecting to the National Grid.



Map of the proposed West Burton site areas and cable route search corridor connecting to the National Grid



West Burton 1 (around 90 hectares), West Burton 2 (around 330 hectares) and West Burton 3 (around 371 hectares)



West Burton 4 (around 248 hectares)

# The Planning Process

**Given the amount of renewable energy each of the projects would generate, they will each be classified as a separate Nationally Significant Infrastructure Project (NSIP). This means that, to gain permission to build both projects, we will be submitting two Development Consent Order (DCO) applications, one for each project, to the Planning Inspectorate (PINS).**

For each application to be accepted, we must satisfy PINS that our pre-application consultation for the projects, both with statutory consultees (such as the local planning authorities) and with local communities, has been undertaken properly in accordance with the relevant legislation (the Planning Act 2008). The applications will be determined by the Secretary of State for the Department for Business, Energy, and Industrial Strategy (BEIS).

You can read more information about the DCO planning process on the PINS website here: <https://infrastructure.planninginspectorate.gov.uk/application-process/the-process/>

Our DCO applications are planned to be submitted in Q4 2022. Prior to this we will be commencing a series of community and statutory consultations on our plans for the projects.

Although we will be submitting two DCO applications we recognise the proximity of these projects and are looking to develop the proposals in parallel. This includes coordinating our consultation activities on both projects with joint information events and opportunities to provide feedback so that communities interested in both projects don't have to submit feedback twice.

We are committed to working with communities throughout the development of our proposals for both projects. Throughout the process we will be engaging with communities and plan on presenting and refining our proposals across two phases of consultation. Our phase one community consultation starts on **Wednesday 03 November 2021**. It will run for over 6 weeks, closing on **Wednesday 15 December 2021**.

Ahead of our phase two consultation, which will be a statutory consultation, we will also publish a Statement of Community Consultation (SoCC) for each project, outlining how we are engaging throughout the development of both the Cottam and West Burton Solar Projects, and how we will seek and consider feedback as part of our phase two consultation. Our second phase of consultation will include sharing the findings of our Preliminary Environmental Information Report (PEIR).

## Have Your Say

Our phase one consultation is intended to create open communication channels with local communities. We value local knowledge and are confident that this consultation will result in a strong set of proposals that respects the neighbouring community while generating clean energy. Learn more about our proposals and provide your feedback to our phase one consultation in the following ways:



Join us at our information events to meet the project team, learn about our proposals, and provide your feedback



Visit our dedicated project websites to view the latest project information and provide your feedback



Contact our communication lines via phone, post or email

Details of our project websites and communication lines are available on the back page of this leaflet.



## Phase One Information Events

As part of our phase one consultation, we are holding a series of five public information events in the local area. These offer the opportunity to view and discuss our plans for both the Cottam and West Burton Solar Projects with members of the project team.

These events will be an early opportunity to view our emerging proposals for the projects and provide your views. We encourage anyone with an interest in either, or both, of the solar projects to come along.

Event	Date	Time
<b>Gringley on the Hill Community Centre</b> , West Wells Lane, Gringley on the Hill, DN10 4QY	Tuesday 16 November	2 30pm - 6 30pm
<b>Willingham Village Hall</b> , High Street, Willingham by Stow, DN21 5JZ	Thursday 18 November	10 30am - 2 30pm
<b>Marton and Gate Burton Village Hall</b> , Trent Port Road, Marton, DN21 5AR	Saturday 20 November	12 30pm - 4 30pm
<b>Blyton Memorial Hall</b> , Church Lane, Blyton, DN21 3JZ	Wednesday 24 November	2 30pm - 6 30pm
<b>Saxilby Village Hall</b> , High Street, Saxilby, LN1 2HA	Thursday 25 November	10 30am - 2 30pm
<b>Or join our webinar by video call or by phone.</b> Get in touch to register.	Tuesday 30 November	6 30pm - 7 30pm

# Project Timeline



All dates are indicative and remain subject change

# Get in Touch

## We want to keep you informed and hear your views on the Cottam and West Burton Solar Projects.

We have set up dedicated project websites, email addresses and Freephone information lines for both Cottam and West Burton Solar Projects. Our communication lines will be available throughout the phase one consultation and will remain open after the consultation period has closed on 15 December. If you have any questions about either project, please don't hesitate to contact the project team using the details below.

### Cottam Solar Project

@ Visit our website: [REDACTED]

🖱️ Email: [info@cottamsolar.co.uk](mailto:info@cottamsolar.co.uk)

☎️ Call: 0808 1691848

✉️ Write to: FREEPOST: CAWB Solar Projects



### West Burton Solar Project

@ Visit our website: [REDACTED]

🖱️ Email: [info@westburtonsolar.co.uk](mailto:info@westburtonsolar.co.uk)

☎️ Call: 0808 1691858

✉️ Write to: FREEPOST: CAWB Solar Projects



If you would like this document in large print, audio or braille formats, please contact us using the details above.

## Phase One Feedback Form



# Cottam and West Burton Solar Projects Phase One Community Consultation Feedback Form

**Wednesday 03 November 2021 to Wednesday 15 December 2021.**

We want to hear your views on our early proposals for the Cottam and West Burton Solar Projects. This will help us to identify and better understand any potential local impacts and opportunities. We are also keen to hear about other potential local needs, and initiatives that we could facilitate or deliver directly. We look forward to receiving your suggestions through our consultation.

To inform your responses to this feedback form, please review the information presented in our consultation leaflet, on our project websites, or attend one of our information events.

Once completed, this form can be returned to FREEPOST: CAWB Solar Projects.

Alternatively, you can provide your feedback online via our project websites or by contacting us through our communication channels. Please see the back page of this form for more details on how to respond and get in touch.

## About you Personal information

You do not have to supply personal details. However, this will help us to understand who has accessed our consultation resources and to enable us to contact you regarding the Cottam and West Burton Solar Projects. Your personal details will be stored in compliance with the Global Data Protection Regulation (GDPR) by Counter Context acting on behalf of Island Green Power and will not be shared with third parties.

Name:  Title:

Organisation (if applicable):

Address:

Postcode:  Telephone:

E-mail address:

## More about you

### Q1: How would you describe your interest?

- Local resident
- Local representative
- Landowner
- Local business owner
- Regular visitor
- Local interest group member (if so, please name)
- Statutory organisation
- Other (please specify):

The proposals for the Cottam Solar Project and West Burton Solar Project are being brought forwards at the same time, and the projects are located close together. We recognise you may be interested in both projects. Please let us know if you would like your feedback to be considered for both projects or for one project specifically.

**Q2: Are you providing your feedback on only one of the solar projects, or both?**

I am providing feedback on Cottam Solar Project only:    I am providing feedback on West Burton Solar Project only:    I am providing feedback on both Cottam and West Burton Solar Projects together:

**Our Proposals**

**Q3.a: Based on the information presented as part of our phase one consultation, how supportive are you of our emerging solar project proposals, which would generate clean, affordable, and reliable renewable energy for the national grid, with energy storage for when it is needed most?**

I strongly support the solar project proposals

I support the solar project proposals

I am neither support nor unsupportive

I do not support the solar project proposals

I strongly oppose the solar project proposals

**Q3.b: Please explain why you think this.**

## Project specific feedback

**Q4.a: What environmental issues relating to the proposals are most important to you?  
Please tick the relevant boxes.**

Traffic, access and construction

Air Quality

Noise and light pollution

Water and flood risk

Local heritage

Landscape and views

Local ecology and biodiversity

Energy needs and climate change

Land quality and use

Other (please detail)

**Q4.b: Why do you think these things are most important?**

**Q5.a: Both projects involve a series of areas of land. Do you have any specific comments on any of these areas? Please tick the relevant boxes.**

Cottam 1

Cottam 2

Cottam 3

West Burton 1

West Burton 2

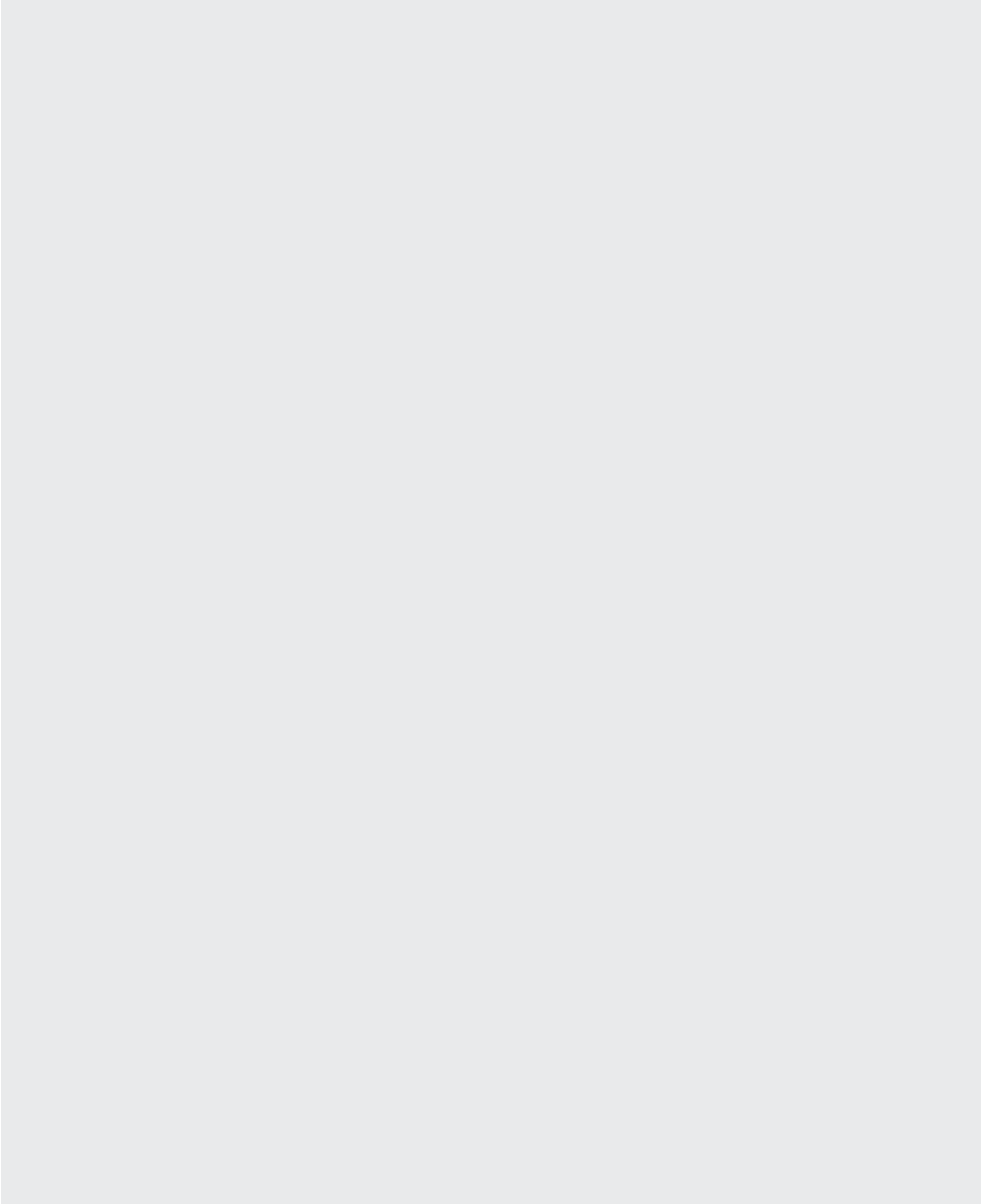
West Burton 3

West Burton 4

**Q5.b: Please provide your specific comments on these areas.**



**Q6: We have shared search corridors for the underground cable routes connecting our sites to each other and to the substation. We are working to refine these corridors, including through engaging with the relevant landowners. What considerations would you like us to prioritise as we refine our cable routes?**



**Q7.a: What types of opportunities would you like to see us explore further in our solar project proposals to help facilitate, or directly deliver, other potential initiatives to meet local needs and provide wider benefits to the community?**

- Providing a community fund to support local groups and projects
- Including recreational access improvements such as new footpaths and bridleways in our design, for the local community to access the countryside
- Aligning our landscaping with other local proposals to deliver public value and promote collaborative opportunities such as rewilding and a net gain in biodiversity
- Providing other free-to-use community infrastructure as part of the proposals, such as solar powered electric vehicle charging points
- Other (please specify)

**Q7.b: Please provide any examples or further comments.**

**Q8: Do you have any further comments on our proposals at this stage?**

## Our Consultation

**Q9: How did you find out about this consultation?**

- I received a leaflet
- I saw it advertised in media
- I saw it advertised on social media
- Via a local community group
- Word of mouth
- Other (please specify):

**Q10: Have you attended one of our information events?**

- Yes
- No

**Q11: How informative did you find our consultation materials?**

- Very informative
- Quite informative
- Not informative
- No opinion

**Q12: Do you have any further comments on our approach to consultation for the Cottam and West Burton Solar Projects?**

## Get in touch

To return your completed feedback form, put this feedback form in an envelope and address it to FREEPOST: CAWB Solar Projects. You will not need a stamp.

Alternatively, you can answer the same questions on our digital engagement platform via: [REDACTED]

Our dedicated project websites, email addresses and Freephone information lines for both Cottam and West Burton Solar Projects are also all available. If you have any questions about either project, please don't hesitate to contact the project team using the details below.

### Cottam Solar Project

@ **Email:**  
info@cottamsolar.co.uk

📞 **Freephone information line:**  
0808 1691848

🖱️ **Visit our website:**  
[REDACTED]



### West Burton Solar Project

@ **Email:**  
info@westburtonsolar.co.uk

📞 **Freephone information line:**  
0808 1691858

🖱️ **Visit our website:**  
[REDACTED]



## Phase One Consultation Newspaper Advert



## Cottam Solar Project and West Burton Solar Project

### Phase one consultation on early-stage proposals for two new solar and energy storage projects that would cross the county border between Lincolnshire and Nottinghamshire.

Cottam and West Burton Solar Projects are being developed by Island Green Power. These proposals involve the generation of renewable power through solar photovoltaic (PV) panels. This clean energy would then be connected to the National Grid at Cottam and West Burton Power Stations with the facility to store some of this energy on site for when it is needed most.

The aim of our phase one consultation is to introduce ourselves, present our emerging proposals at this early stage, set out the opportunity for the projects, and receive feedback from the community to help identify and understand any local impacts. We are also keen to hear about other potential local needs or initiatives that we could facilitate or deliver directly, and we look forward to receiving your suggestions through the consultation.

Our consultation started on **Wednesday 03 November 2021**. It will run for 6 weeks, closing on **Wednesday 15 December 2021**.

As part of our phase one consultation, we are holding a series of five public information events in the local area. We encourage anyone with an interest in either, or both, of the solar projects to come along.

Event	Date	Time
<b>Gringley on the Hill Community Centre</b> , West Wells Lane, Gringley on the Hill, DN10 4QY	Tuesday 16 November	2 30pm - 6 30pm
<b>Willingham Village Hall</b> , High Street, Willingham by Stow, DN21 5JZ	Thursday 18 November	10 30am - 2 30pm
<b>Marton and Gate Burton Village Hall</b> , Trent Port Road, Marton, DN21 5AR	Saturday 20 November	12 30pm - 4 30pm
<b>Blyton Memorial Hall</b> , Church Lane, Blyton, DN21 3JZ	Wednesday 24 November	2 30pm - 6 30pm
<b>Saxilby Village Hall</b> , High Street, Saxilby, LN1 2HA	Thursday 25 November	10 30am - 2 30pm
<b>Webinar</b>		

Feedback can also be provided through our website, by completing and submitting a feedback form via post, or by contacting us through our communication channels. Hard copies of consultation materials can be requested via post by contacting our communication channels. Details of our project websites and communication lines are available below.

#### Cottam Solar Project

- @ Visit our website: [REDACTED]
- ✉ Email: [info@cottamsolar.co.uk](mailto:info@cottamsolar.co.uk)
- ☎ Call: 0808 1691848
- ✉ Write to: FREEPOST: CAWB Solar Projects

#### West Burton Solar Project

- @ Visit our website: [REDACTED]
- ✉ Email: [info@westburtonsolar.co.uk](mailto:info@westburtonsolar.co.uk)
- ☎ Call: 0808 1691858
- ✉ Write to: FREEPOST: CAWB Solar Projects

## Phase One Site Area and Cable Route Search Corridor Maps

# Cottam Solar Project



Phase one consultation  
Site area maps

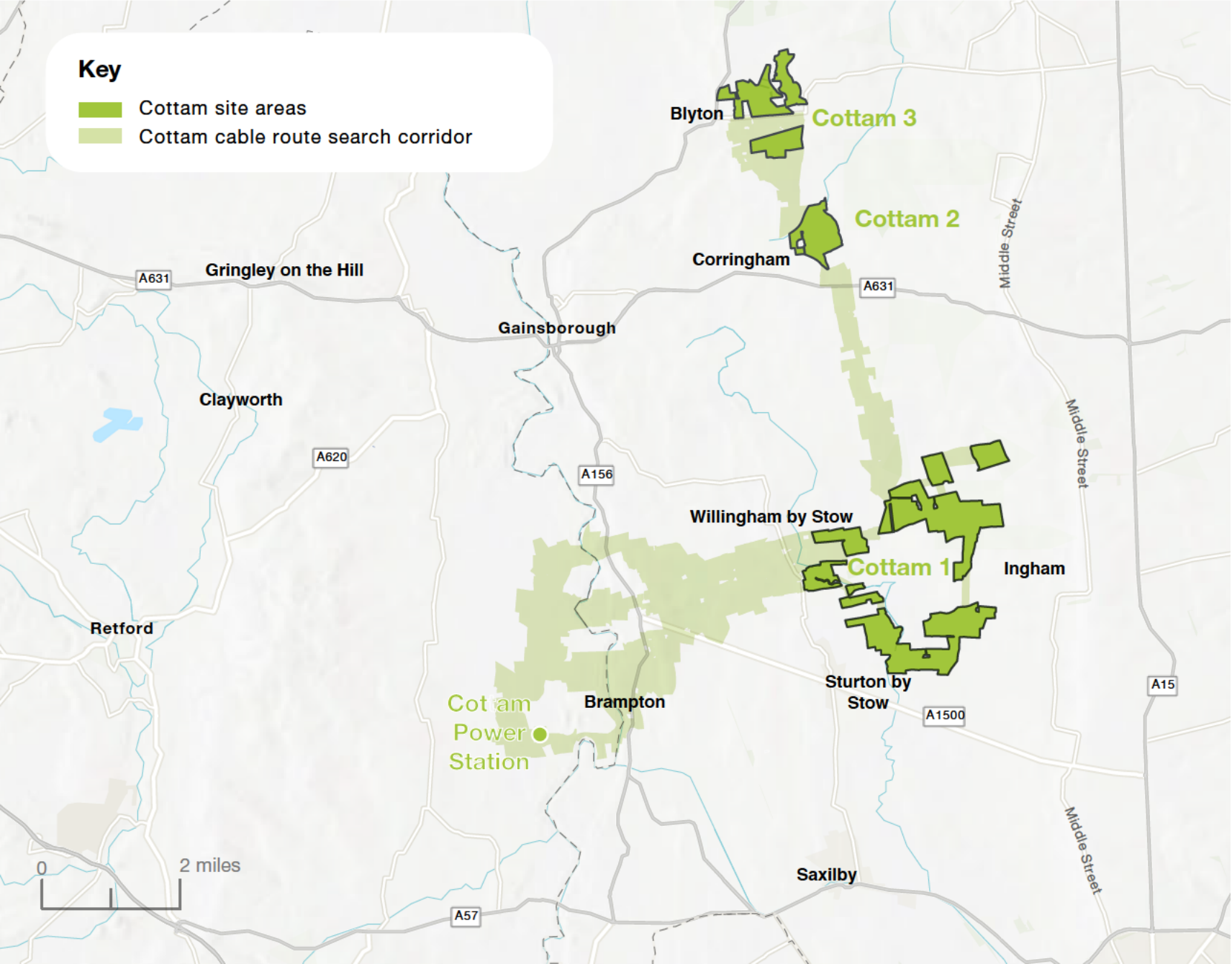
November 2021

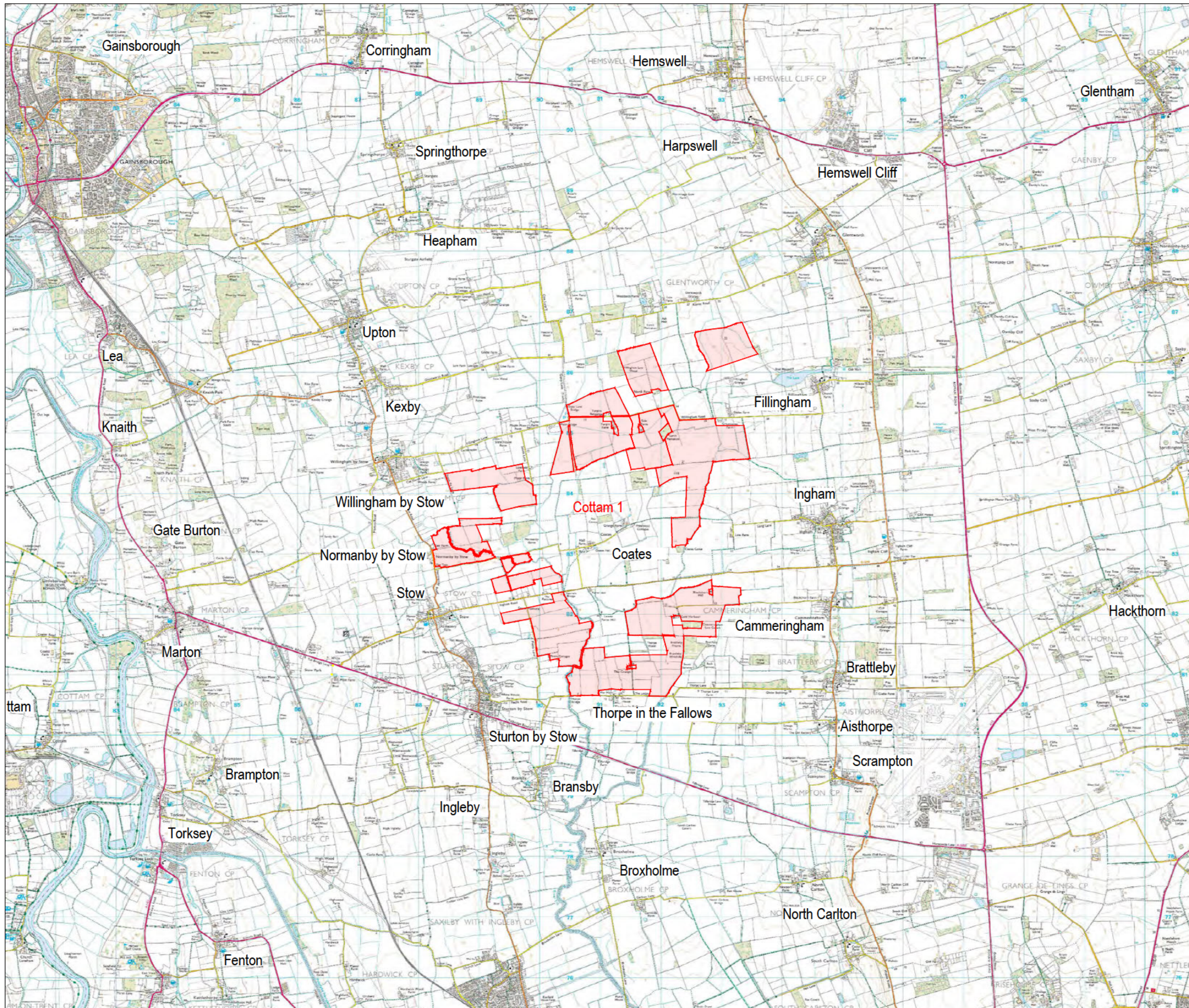


















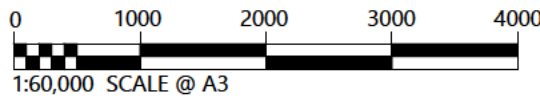
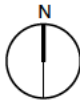
# Key

-  Cottam site areas
-  Cottam cable route search corridor





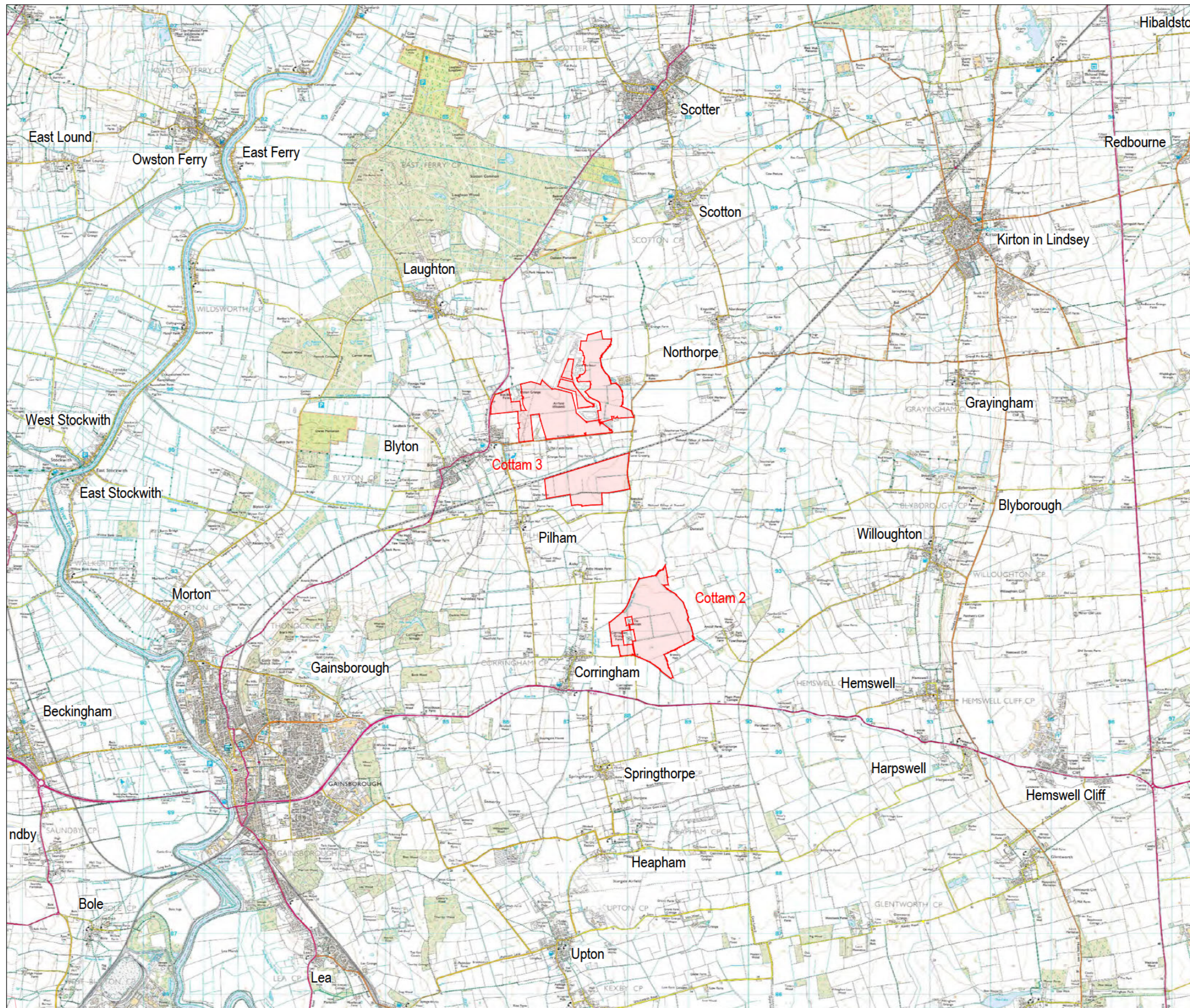
- Key**
-  Site Boundary
  -  Main roads
  -  Secondary roads
  -  Road (generally more than 4m wide)
  -  Road (generally less than 4m wide)
  -  Other road, drive or track
  -  Path
  -  PRoW Footpath
  -  PRoW Bridleway
  -  PRoW Byway open to all traffic
  -  PRoW Restricted byway
  -  Other routes with public access
  -  Recreational route
  -  Watercourses
  -  Woodlands


















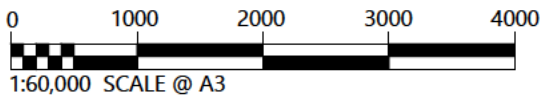
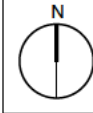
Drawn by: TH	Ref: 2892-REP-301
Checked by: MT	Date: 21/10/2021

**Figure 3.1**  
Cottam 1  
Site Location

**COTTAM SOLAR FARM**  
Landscape and Visual Impact Assessment



- Key**
-  Site Boundary
  -  Main roads
  -  Secondary roads
  -  Road (generally more than 4m wide)
  -  Road (generally less than 4m wide)
  -  Other road, drive or track
  -  Path
  -  PRoW Footpath
  -  PRoW Bridleway
  -  PRoW Byway open to all traffic
  -  PRoW Restricted byway
  -  Other routes with public access
  -  Recreational route
  -  Watercourses
  -  Woodlands



Drawn by: TH	Ref: 2892-REP-201
Checked by: MT	Date: 21/10/2021

**Figure 2.1**  
Cottam 2 & 3  
Site Location

**COTTAM SOLAR FARM**  
Landscape and Visual Impact Assessment

## Phase One Information Event Boards

# Welcome to our information event

**Have a look around and learn more about our proposals for Cottam Solar Project and West Burton Solar Project. We are here today to introduce ourselves, share information on our emerging proposals for each project and hear your feedback.**

We welcome your views and comments to help us refine our proposals. We are also keen to hear about other potential local needs or initiatives that we could facilitate or deliver directly, and we look forward to receiving your suggestions.

---



# Who is Island Green Power?

Island Green Power is a leading international developer of renewable energy projects, established in 2013.



We have delivered 26 solar projects worldwide totalling more than 1GW of capacity. This includes 14 solar projects in the UK and Republic of Ireland. Our mission is to increase solar energy usage, making more renewable energy possible and saving thousands of tonnes of CO2 in the process.

Cottam Solar Project Limited and West Burton Solar Project Limited are companies created by Island Green Power to develop Cottam Solar Project and West Burton Solar Project.



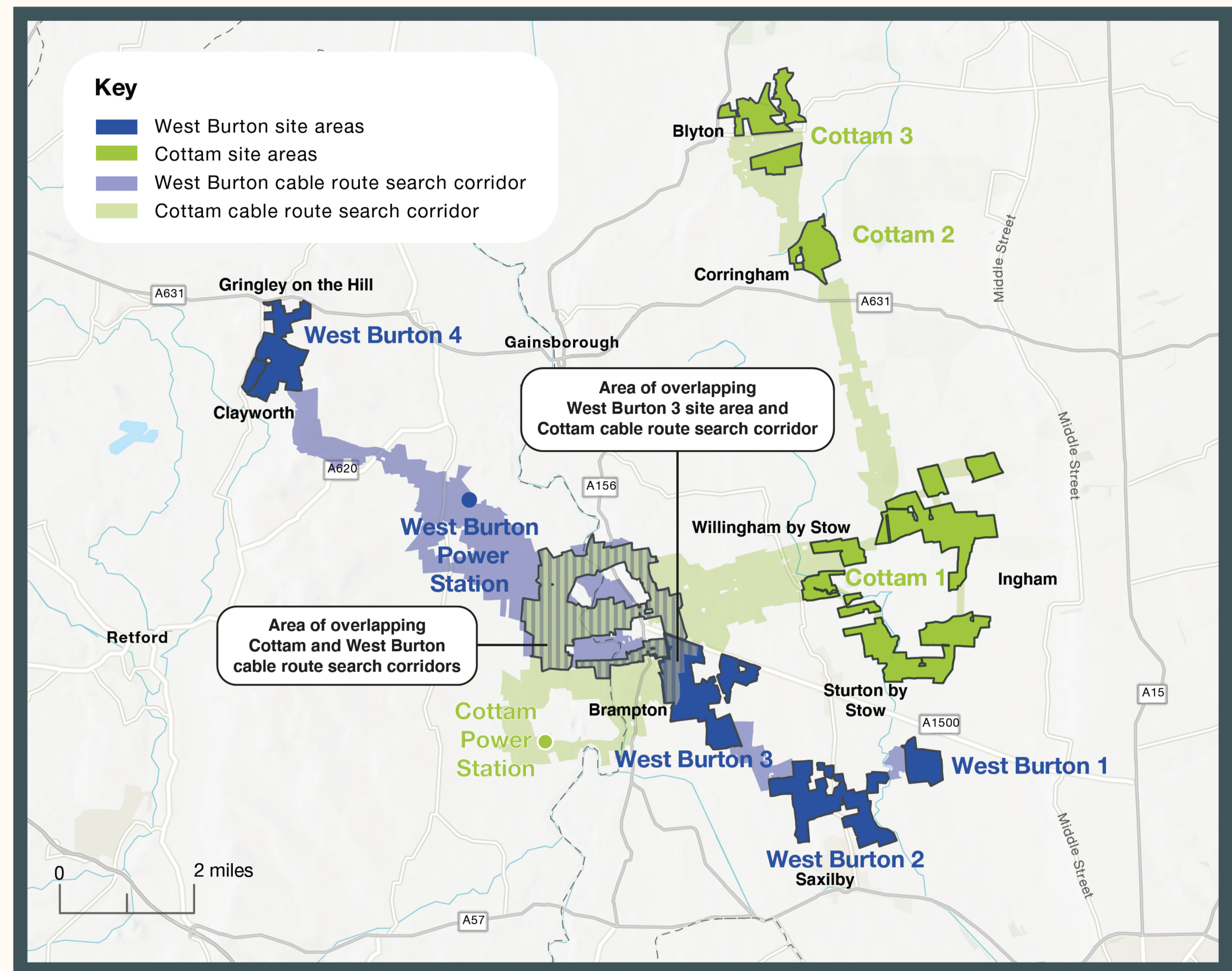
# About the projects

Both projects are named after their grid connection points at the existing National Grid substations at the Cottam Power Station and West Burton Power Station. Each project involves a series of areas of land which would host ground-mounted solar panels and be connected by underground cables.

We are currently working with relevant landowners to refine the search corridors for the routes of these cables. Our cable routes will avoid residential properties and businesses, as well as other important local areas, such as heritage features or Sites of Special Scientific Interest (SSSIs).

Cottam Solar Project would generate around 600 MW of renewable energy and West Burton Solar Project would generate around 480 MW of renewable energy, both with the facility to store some of this energy for when it is needed most.

Because of the amount of renewable energy each project would generate, they will each be classified as a separate Nationally Significant Infrastructure Project (NSIP). This means that, to gain permission to build both projects, we will be submitting two Development Consent Order (DCO) applications, one for each project, to the Planning Inspectorate (PINS).



Map of the proposed Cottam and West Burton site areas and cable route search corridors connecting to the National Grid

# Why do we need solar?

## The challenge.

The UK is committed to reducing greenhouse gas emissions to net zero by 2050. Achieving this target will require extensive changes to how we power our country. In particular, we need to quickly and significantly increase our generation of renewable and low carbon electricity.


From October 2024, Great Britain will no longer use coal to generate electricity. This involves the decommissioning of the coal powered Cottam and West Burton power stations. New sources of energy are required to replace this. At the same time, we know demand for electricity is continuing to increase and that the UK faces some of the highest electricity costs in Europe.

## There is a clear need for renewable, affordable, and reliable energy.

By harnessing energy from the sun, solar projects generate renewable power in a sustainable way from a non-exhaustible source.

Solar projects also complement other types of renewable energy, such as wind, particularly during the summer when winds are lighter and daylight hours are longer. Diversifying how we produce renewable power makes us more resilient.

Solar projects also provide affordable electricity, cheaper than electricity generated from fossil fuels on a £/MWh basis.



**The decommissioning of Cottam and West Burton power stations presents the opportunity to repower the region with clean, green energy. Developing large-scale solar projects will help keep the lights on, without carbon emissions, and at a low cost to customers.**



# The opportunity

**The decommissioning of Cottam and West Burton Power Stations presents the opportunity to repower the region with clean, green energy.**



The Cottam Solar Project could replace around 30% of the former generation capacity of the coal powered Cottam Power Station and generate enough clean energy to power 180,000 homes



The West Burton Solar project could replace around 24% of the generation capacity of the coal powered West Burton Power Station and generate enough clean energy to power 144,000 homes



Supporting regional and national targets for reducing carbon emissions to net zero by 2050



Improving energy resilience by diversifying energy production and storing energy for when it is needed most



Contributing towards strategic improvements to local ecology and biodiversity



Delivering affordable energy, as the electricity generated from solar is already cheaper than electricity generated from fossil fuels and the project would be subsidy free without taxpayer funding



Facilitating or directly delivering other potential local needs or initiatives, which could be suggested by you through our consultation

# What will the solar farms look like?

Although the exact technology and type of solar arrays to be used for the projects have yet to be decided, in part due to their rapid and ongoing development, the image below shows the typical components involved in a solar project. For these projects, the infrastructure is spread over multiple sites.

At this stage the exact size, height and number of panels for the projects is yet to be decided. Heights may also vary depending on the local surroundings, and the outcome of our environmental and technical assessments for each site area. However, the maximum height of the top of the panels being considered is 4.5m above ground level.

## Components of a typical solar project

1. Solar Energy
2. Fencing
3. Solar Panels
4. Inverter (DC to AC power converter)
5. Landscape Area
6. Substation
7. Energy Storage
8. Underground Cable

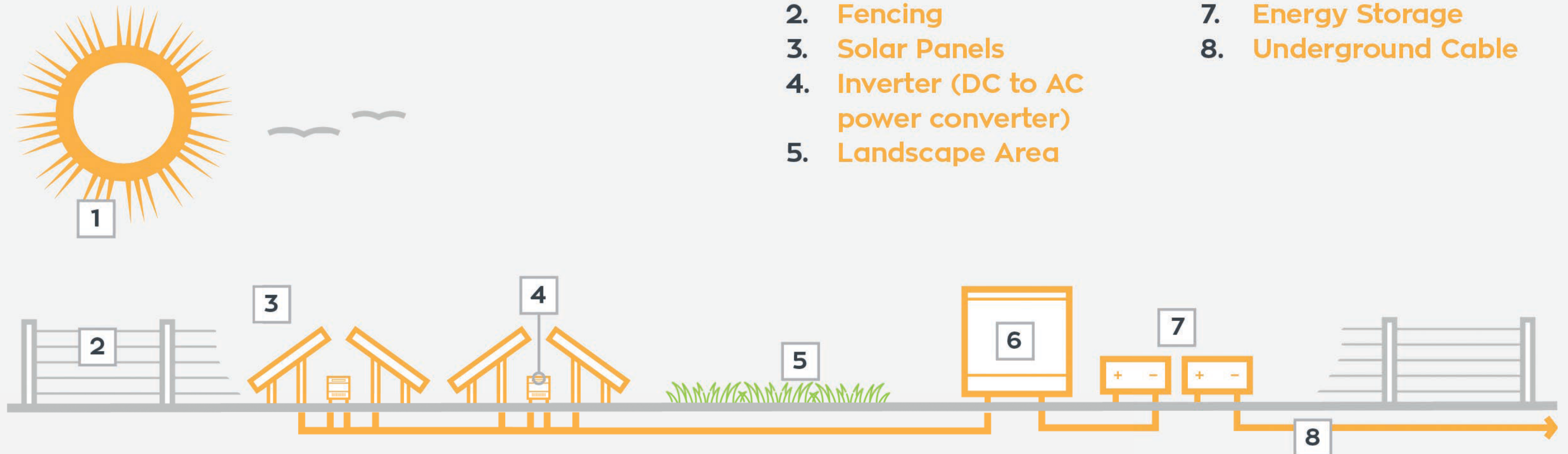


Figure not to scale and for indicative purposes only.

## Our site selection process

**Using existing grid connection infrastructure reduces the potential impacts of new solar projects, and we have secured an agreement with National Grid for this at Cottam and West Burton. Each of the projects involves a series of areas of land which would host ground-mounted solar panels and be connected by underground cables.**

Our team has undertaken an extensive process of site selection to identify areas of land close by to the existing grid connection infrastructure. The use of several separate land parcels also reduces the impact on the local area compared to fewer larger sites.

Our team has identified the proposed site areas as suitable for solar energy generation within appropriate distance to the agreed grid connection points. We considered a range of factors including:

- Their existing land use and quality
- The need to avoid existing environmental or heritage sites
- Other environmental issues such as minimising visual impact
- Agreement with the relevant landowners



## Developing the proposals further

**As our proposals are still at an early stage, we are continuing to work to further develop parts of the detailed design for the projects which are yet to be decided. The proposals for each project involve a series of parcels of land connecting to the National Grid by underground cables. However, we are still working to refine our proposals in the following areas:**

- Layout and positioning of the solar panels
- Location of the substations for each project
- Location of the energy storage for each project
- Any additional land required for West Burton substation and energy storage
- Access routes for each site area
- Additional landscaping, such as planting new trees
- Other detailed environmental mitigation and enhancement measures
- Precise route of the underground cables connecting to the National Grid

Feedback from this phase of consultation will help us develop our proposals. We will then further consult the local community and other stakeholders on our more detailed proposals for the solar projects as part of our phase two consultation next year. You can find out more about our cable route search corridors and ongoing Environmental Impact Assessment (EIA) for each project as part of this information event.

Not every field identified within the site boundaries will be used for solar panels, and instead could be used for the creation of new habitats for wildlife, recreational access routes for the local community, or continue to be used for arable farming or animal grazing. We will also respect features such as existing trees, hedgerows, and public rights of way.

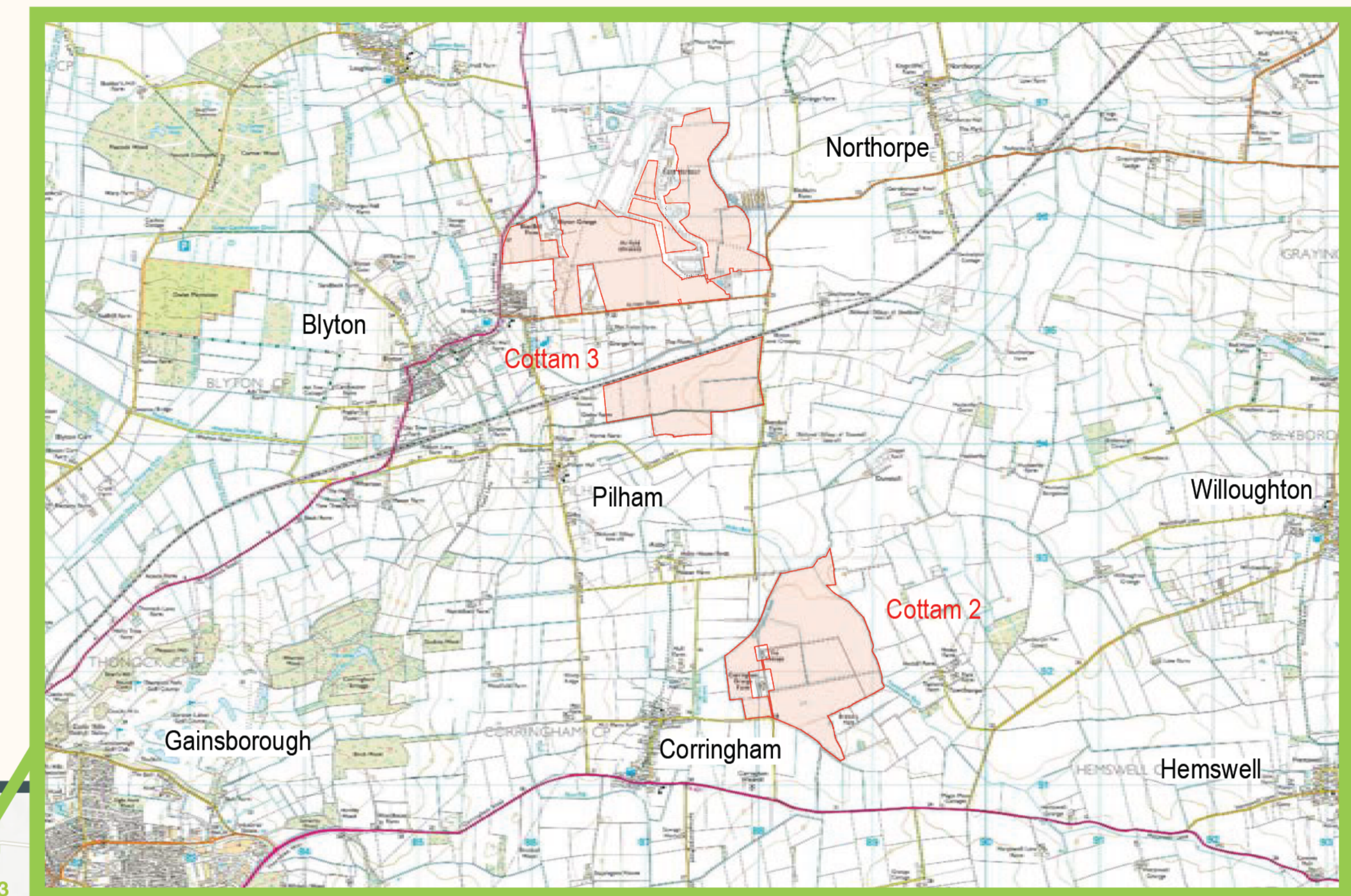
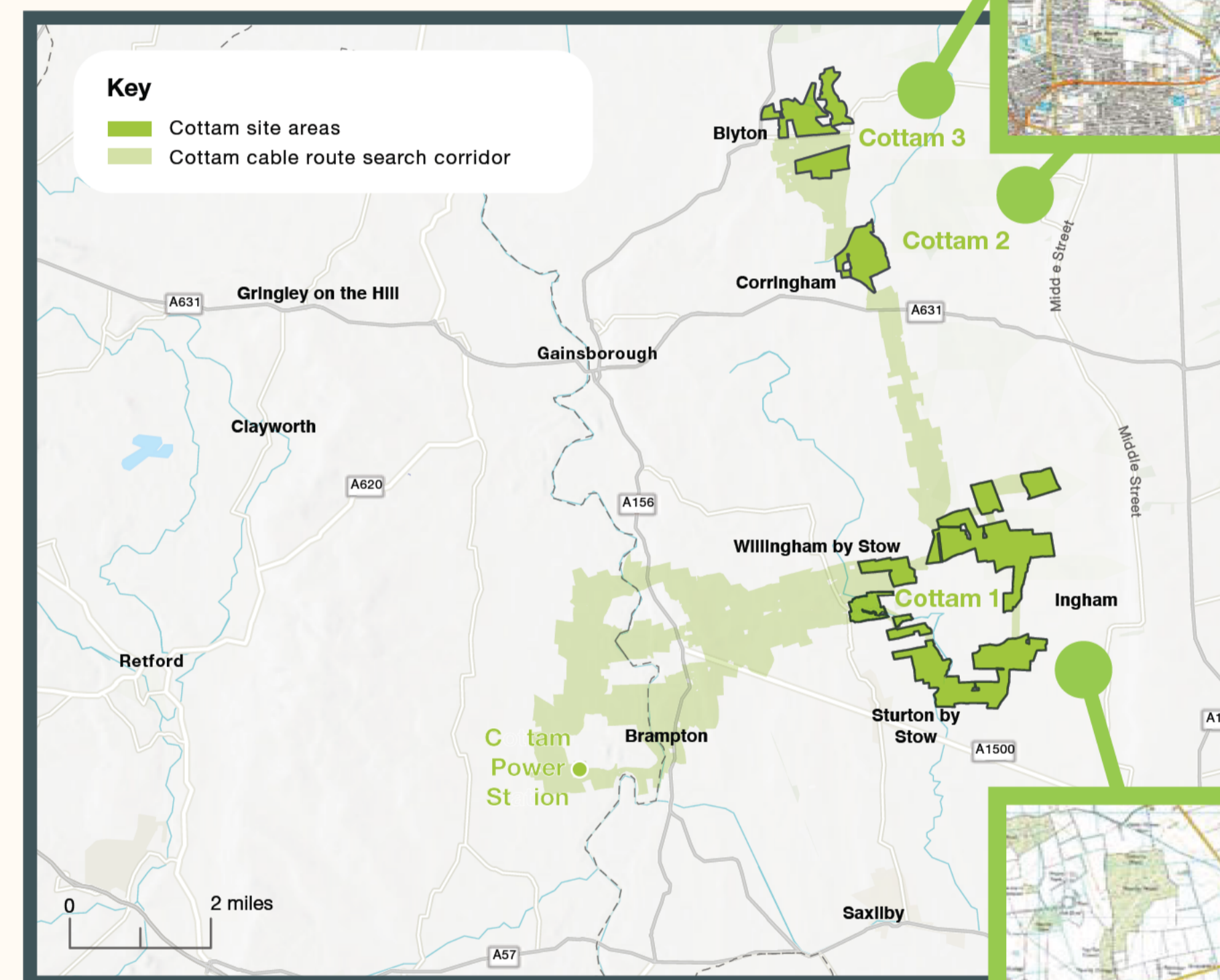
In the meantime, our environmental and technical assessments, alongside your consultation feedback, will help us to continue to develop the detailed design of the proposals in a way that is sensitive to the local surroundings.



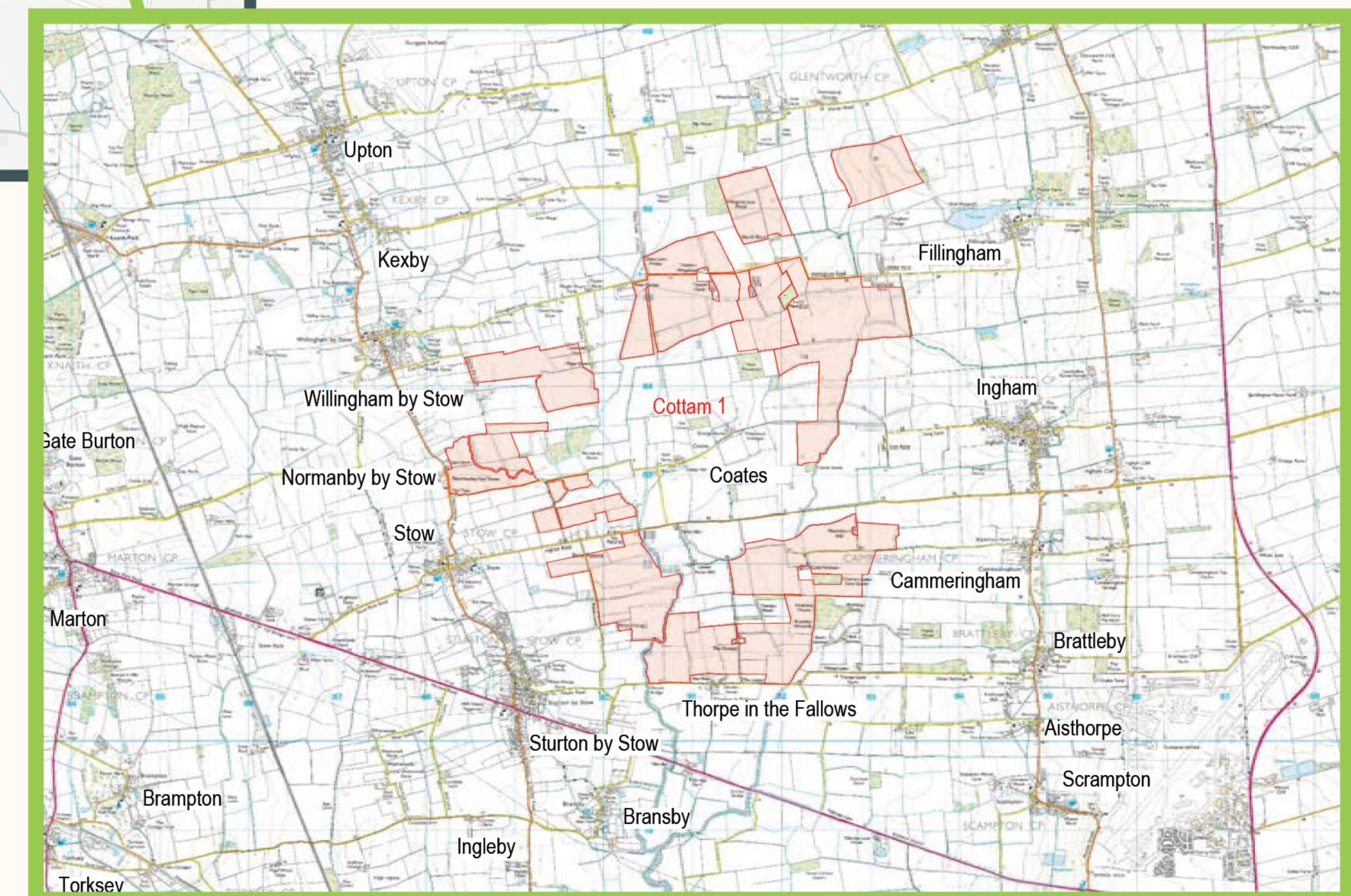
# Cottam site areas

The proposals for Cottam Solar Project involve a series of areas of land. The sites which would host the ground-mounted solar panels to be connected by underground cable are named Cottam 1-3. The project crosses the county boundary between Lincolnshire and Nottinghamshire and would generate around 600 MW of renewable energy, as well as having the capacity to store this energy for when it is needed most.

We have revised and updated our latest estimated hectare figures for Cottam 1 and 3 since publishing our phase one consultation leaflet on 03 November, as we continue to survey the land parcels. The field boundaries for the proposed site areas have not changed.



Cottam 2 (around 132 hectares) and Cottam 3 (around 241 hectares)

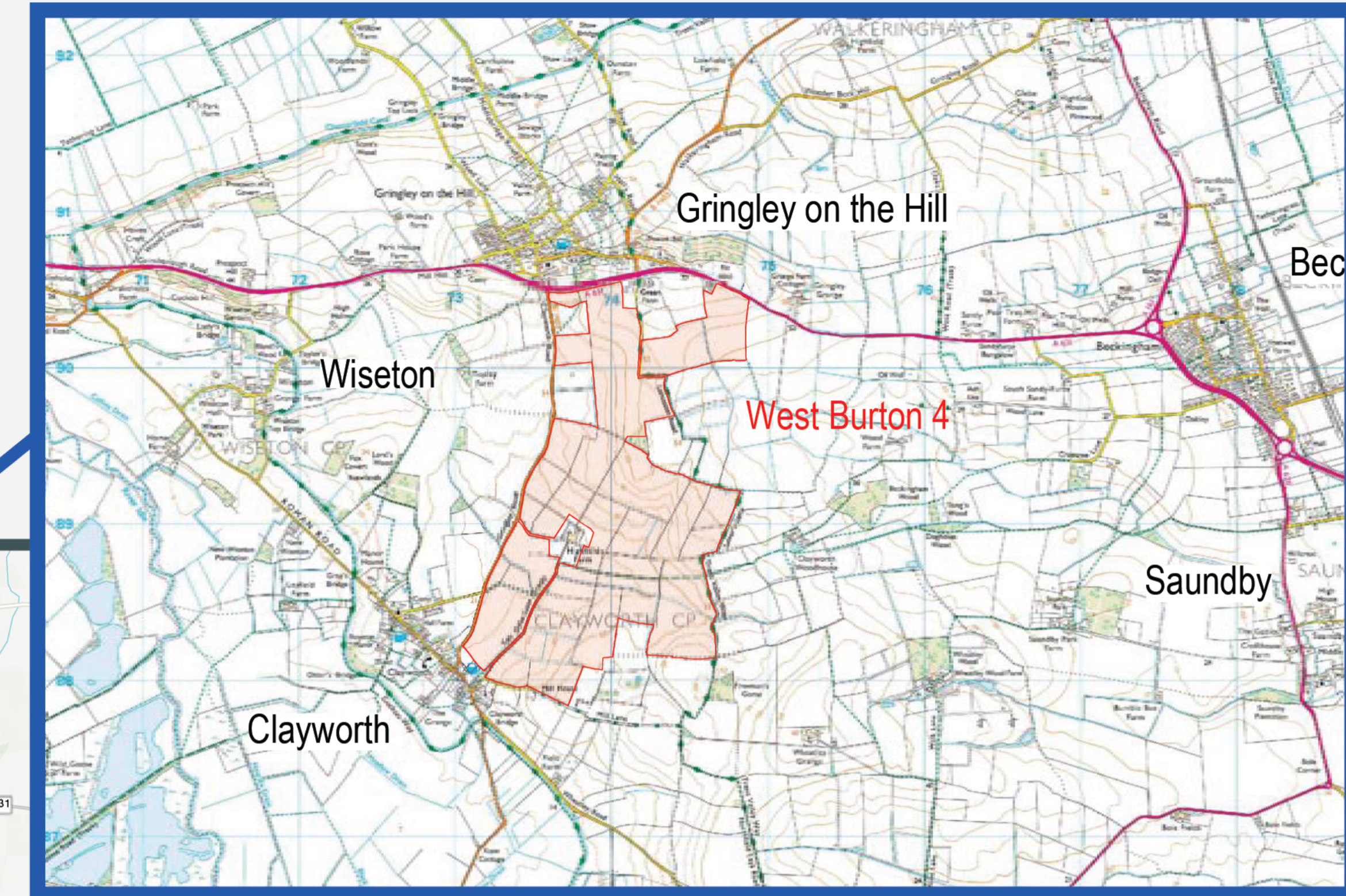
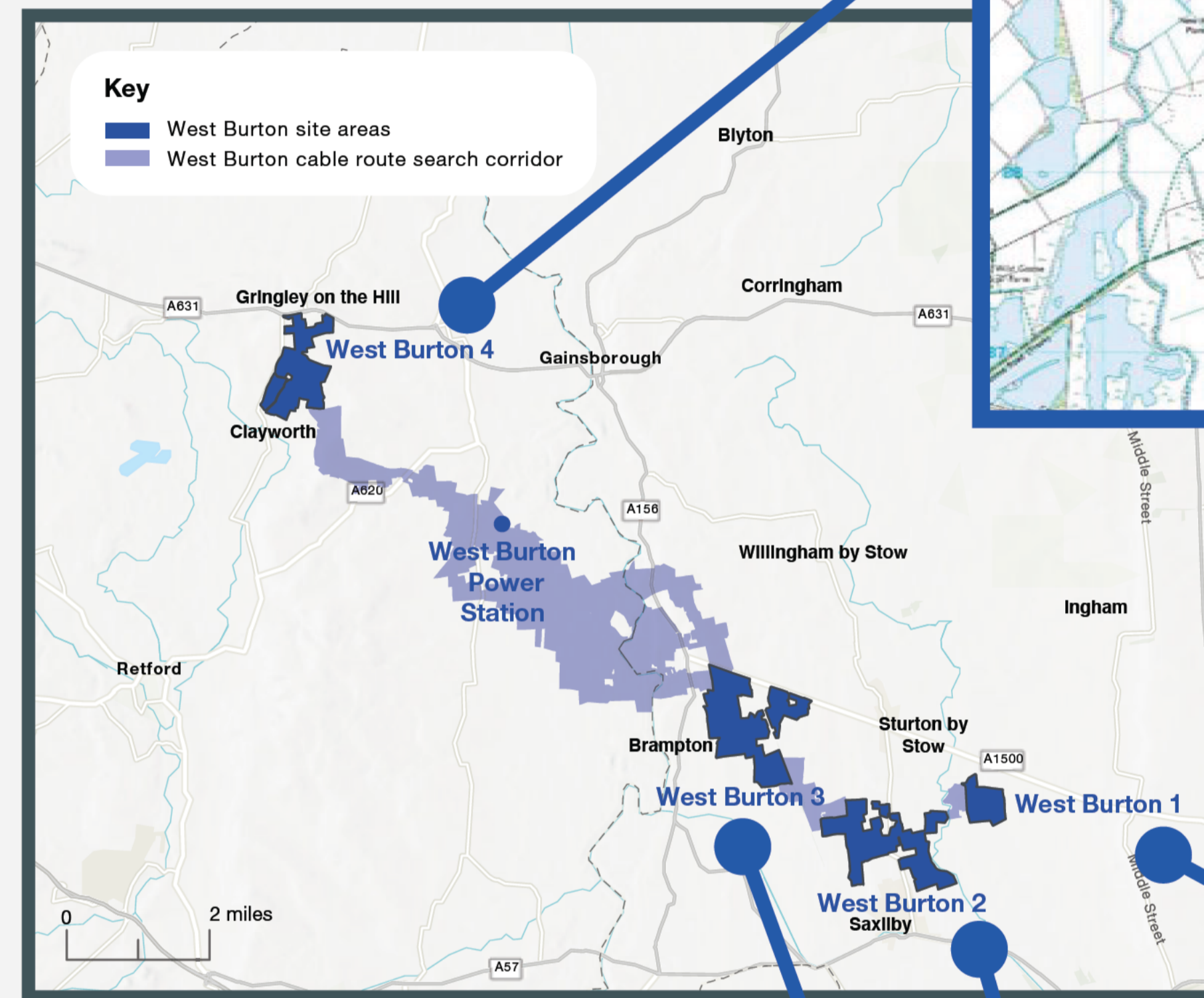


Cottam 1 (around 894 hectares)

# West Burton site areas

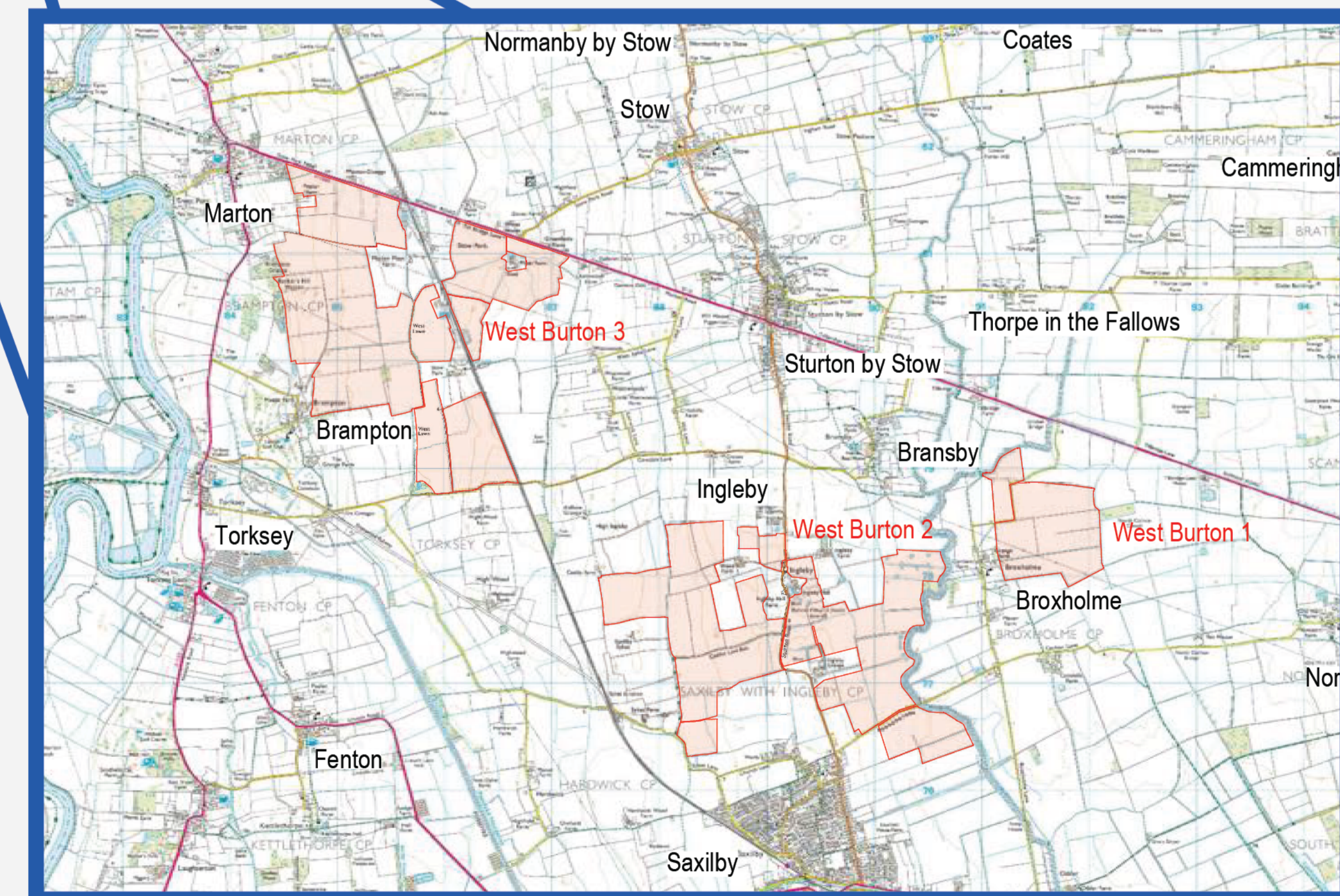
The proposals for West Burton Solar Project involve a series of areas of land. The sites which would host the ground-mounted solar panels to be connected by underground cable are named West Burton 1-4. The project crosses the county boundary between Lincolnshire and Nottinghamshire and would generate around 480 MW of renewable energy, and have the facility to store 20 MW of energy for when it is needed most.

We have revised and updated our latest estimated hectare figures for West Burton 2 since publishing our phase one consultation leaflet on 03 November, as we continue to survey the land parcels. The field boundaries for the proposed site areas have not changed.



West Burton 4 (around 248 hectares)

West Burton 1 (around 90 hectares), West Burton 2 (around 300 hectares) and West Burton 3 (around 371 hectares)



## Cable routes

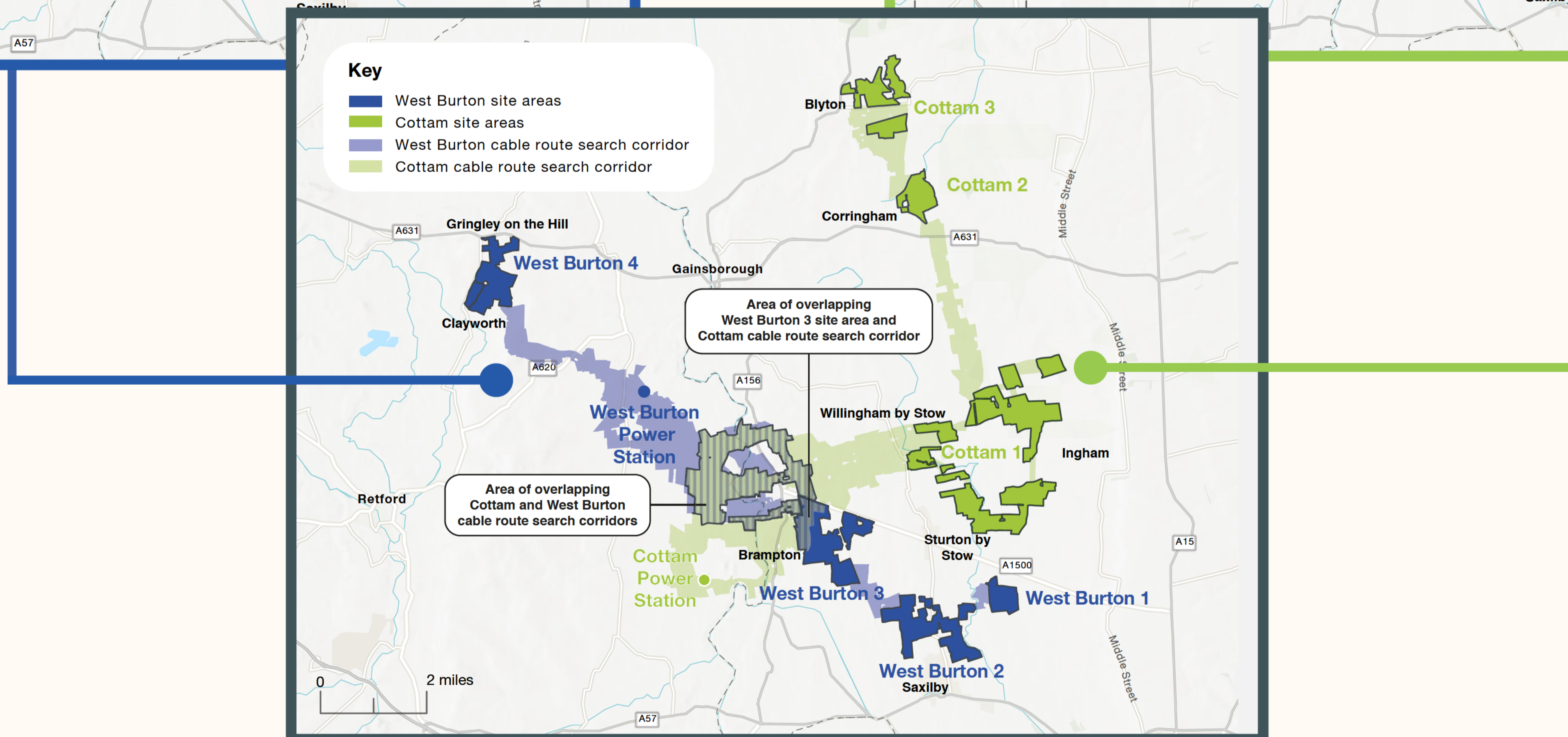
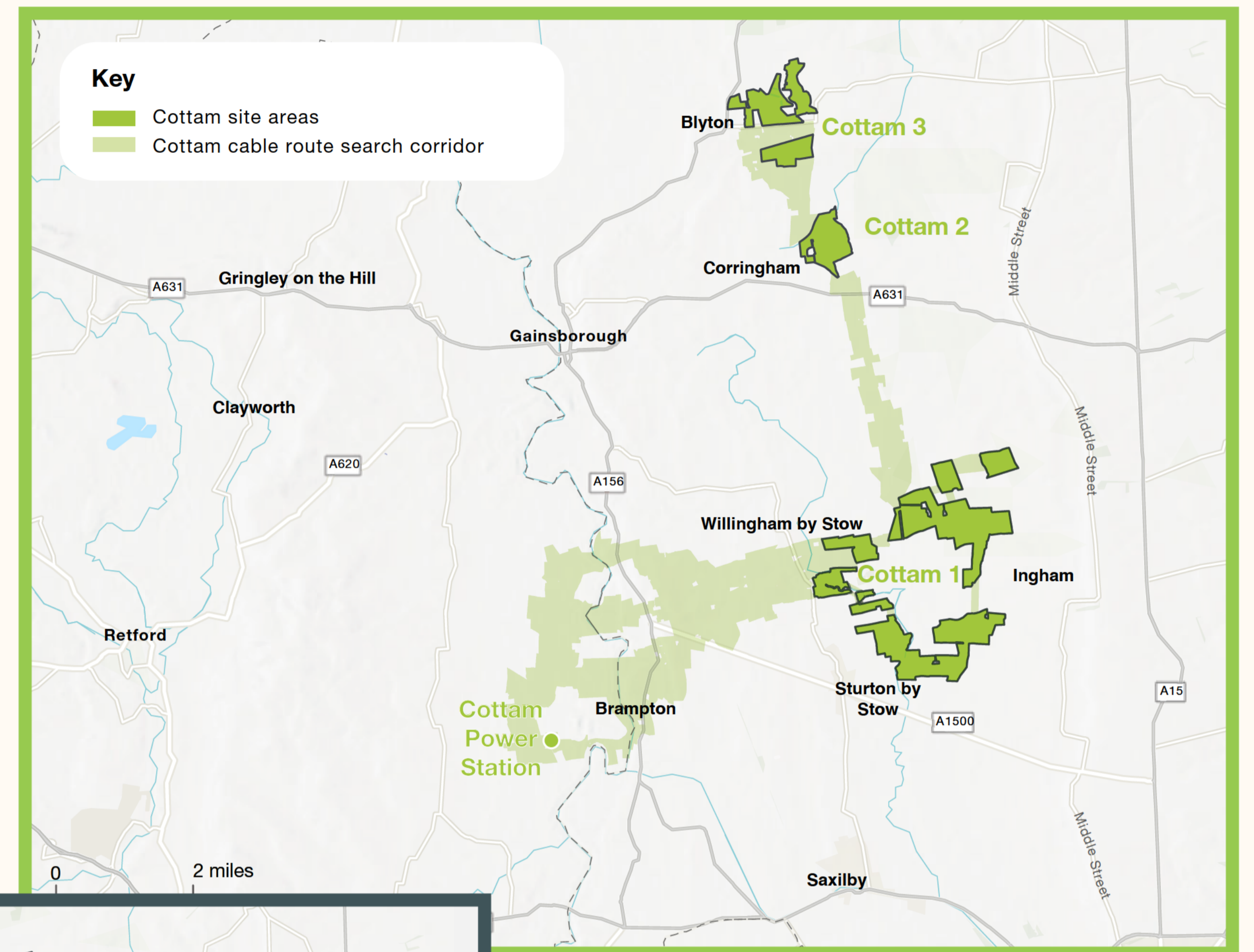
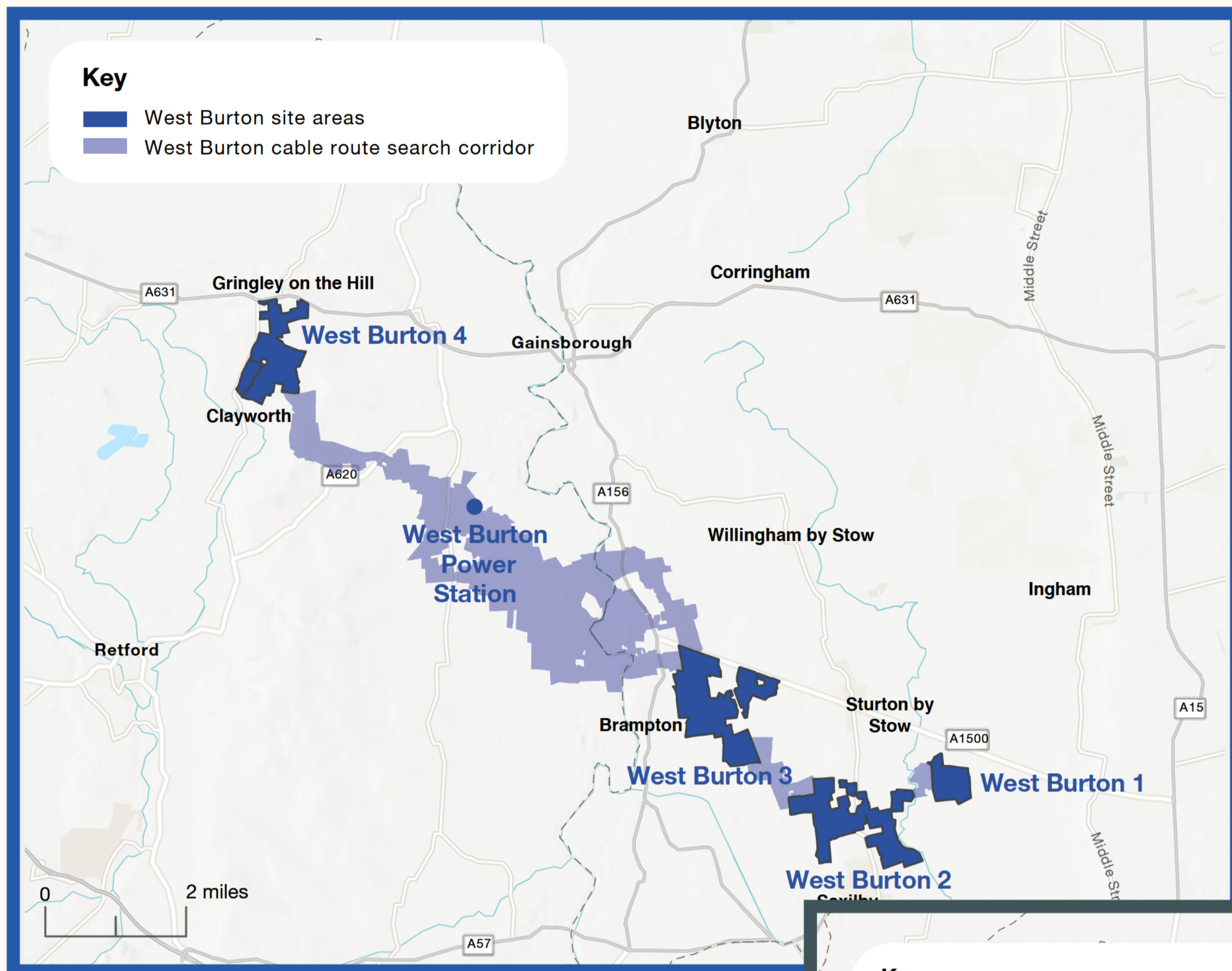
**At this stage the exact route of the underground cables connecting the site areas to their National Grid connection points is yet to be decided. We are currently working with relevant landowners as we refine our cable route search corridors. These are the areas within which we will identify the exact routes the cables would eventually take. The final easement – the area the cable routes would be dug in – would be no wider than 15 meters. For the majority of each route, only one cable trench will be required.**

To allow flexibility we have applied a 100m wide buffer on either side of the search corridor, with broader areas nearer to each grid connection point. Each land parcel which falls partly within the corridor has been included at this stage as we refine our precise route. There is an area of overlap between both the Cottam and West Burton cable route search corridors and between the Cottam search corridor and the West Burton 3 site area.

The separate Gate Burton Project currently being proposed by Low Carbon has also identified potential cable routes that overlap with Cottam Solar Project and West Burton Solar Project. We are committed to working closely with Low Carbon to combine our cable routes where we can, to ensure as little disruption to the local community as possible.

To minimise impacts on the local community and environment, the cable routes for Cottam Solar Project and West Burton Solar Project will avoid:

- Residential and business properties
- Woodland Trust sites
- Local heritage features, such as historic battlefields
- Sites of Special Scientific Interest (SSSIs)
- Registered and National Parks
- RSPB Reserves





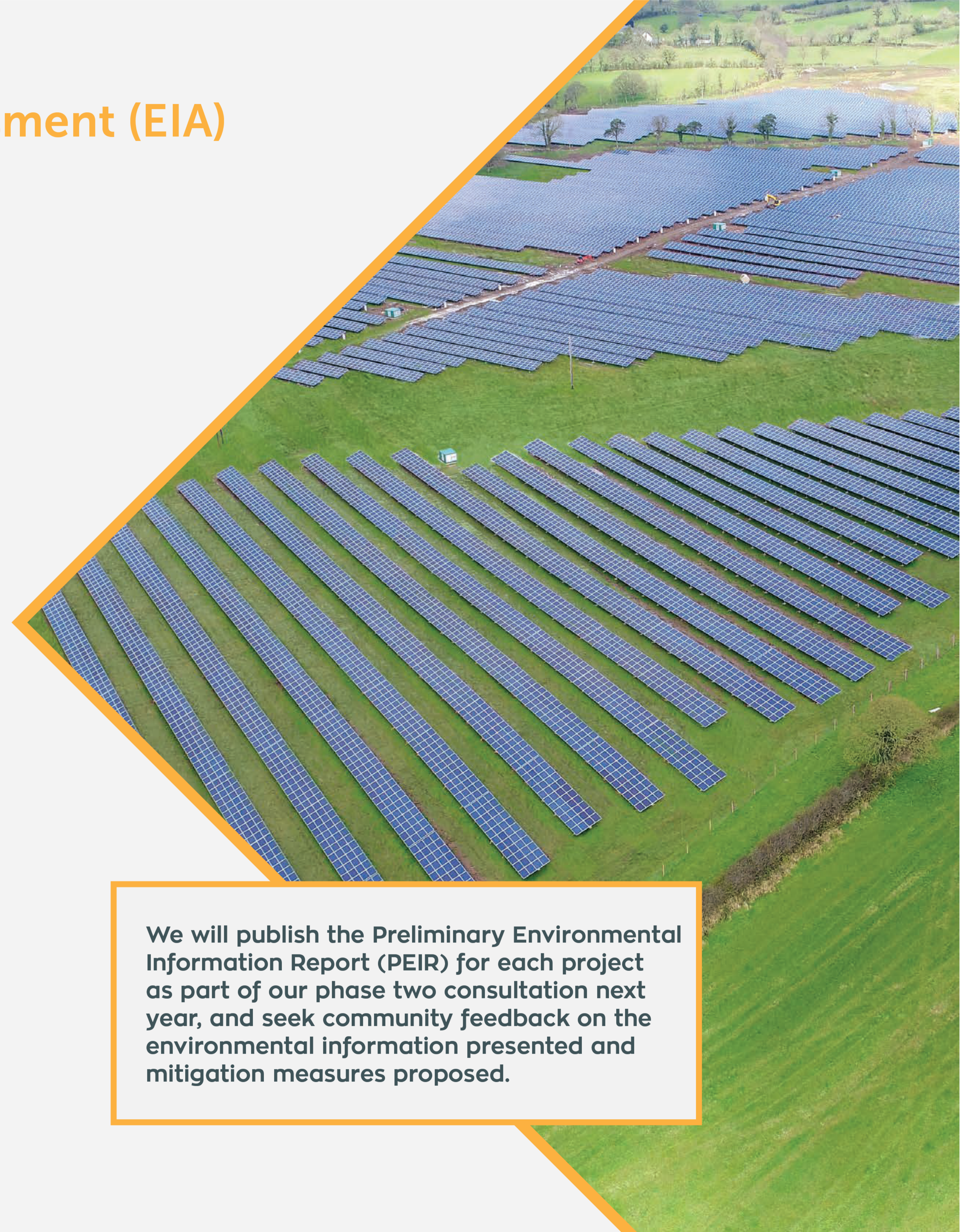
# Environmental Impact Assessment (EIA)

As part of our phase one consultation, we want to hear what environmental issues relating to the proposals are most important to you. This could include:

- Traffic, access and construction
- Air Quality
- Noise and light pollution
- Water and flood risk
- Local heritage
- Landscape and views
- Local ecology and biodiversity
- Energy needs and climate change
- Land quality and use

We will carefully consider all feedback received, alongside our ongoing technical assessments, to help us develop the proposals further. We are also undertaking a full Environmental Impact Assessment (EIA) for each solar project. EIA is a detailed process where the likely environmental effects of the proposed development are studied, surveys are carried out and mitigation measures to reduce or remove environmental impacts are identified.

**We will publish the Preliminary Environmental Information Report (PEIR) for each project as part of our phase two consultation next year, and seek community feedback on the environmental information presented and mitigation measures proposed.**



## Community benefits

As part of our phase one consultation, we want to hear your views and comments about any potential local needs or initiatives that we could facilitate or deliver directly. This could include:



Providing a community fund to support local groups and projects



Including recreational access improvements such as new or upgraded footpaths and bridleways in our design, for the local community to access the countryside



Aligning our landscaping with other local proposals to deliver public value and promote collaborative opportunities such as rewilding and a net gain in biodiversity



Providing other free-to-use community infrastructure as part of the proposals, such as solar powered electric vehicle charging points

**We are also keen to hear any other suggestions you may have about these options or any other opportunities for how we can best deliver benefits for the local community as part of the projects.**



# Timeline for the projects

**To gain permission to build both projects, we will be submitting two Development Consent Order (DCO) applications, one for each project, to the Planning Inspectorate (PINS).**

For each application to be accepted, we must satisfy PINS that our consultation for the projects has been undertaken properly. Our DCO applications for Cottam Solar Project and West Burton Solar Project are planned to be submitted to PINS in Q4 2022. The applications will be determined by the Secretary of State for the Department for Business, Energy, and Industrial Strategy (BEIS).

It is anticipated that construction would start on site from 2024.



All dates are indicative and remain subject change

## What happens next?

**We really value your feedback. This will help us develop our proposals to deliver clean energy in a way that respects the neighbouring communities and local environment.**

This event is an opportunity for you to meet members of the project team and discuss any questions you may have with them, but please don't forget to also fill out one of the feedback forms provided to submit your consultation response. Alternatively, you can take one away and return it to us via FREEPOST: CAWB Solar Projects, or answer the same questions online through our digital engagement platform:



The deadline for providing feedback is **Wednesday 15 December 2021**. We will carefully consider all feedback received, alongside our ongoing technical assessments, to help us develop the proposals further before presenting more refined proposals alongside detailed environmental information as part of our phase two consultation next year.

